

多功能管線探測器

vLoc-5000 Utility Locating System



廠牌：美國 

型號：vLoc-5000

vLoc-5000 Data Sheet Brochure

The vLoc-5000 is a multi-purpose precision locator receiver. It's used for locating & pinpointing the position of buried pipes and cables.

The vLoc-5000 is a more accurate locator with the included positive line ID features. Signal Select™ and Distortion Alert™ are incorporated into one easily understood icon on the display. Other enhancements include high-capacity Lithium-ion battery technology that lowers operating costs and a variable high power output transmitter, up to 10 Watts.

A. Typical Applications

Item	Parameter
Description	Multi-purpose precision locator receiver
Uses	Locating & pinpointing the position of buried pipes and cables

B. Receiver Assembly

Item	Parameter
Construction	<ul style="list-style-type: none">- Carbon fiber reinforced antenna tube- High impact thermoplastic (ABS) injection molded housing
Weight	4.6lbs (2.1kg)
Dimensions	10.3in(L) x 4.8in(W) x 25in(H) (262mm x 122mm x 639mm)
Display Type	Sharp TFT LCD ¼ VGA color display, 3.52in (89mm)
Receiver Antennas	2 x Peak antennas, 1 x null antenna, 1 x compass antenna
Batteries Options	<ul style="list-style-type: none">- Rechargeable custom Lithium-ion batteries with 100-240V AC mains charger.- Replaceable (6 x standard Alkaline AA batteries) batteries can be used when required
Battery Life	<ul style="list-style-type: none">- Alkaline – typically 12 hours intermittent use at 70°F (21°C)- Lithium-ion – typically 40 hours intermittent use at 70°F (21°C) (with full backlight turned on). Re-charging cycles approx. 500 times life cycle. Battery life varies with temperature.
Bluetooth	<ul style="list-style-type: none">- Plug and Play custom Bluetooth interface
External Connectors	<ul style="list-style-type: none">- 1 x Socket for accessories port (analogue & digital)- 1 x Mini USB socket for data transfer / programming- 1 x Socket for battery charger
Compliance/Approvals	<ul style="list-style-type: none">- Complies with European standard CE (Directive 99/5/EC)<ul style="list-style-type: none">• EN 55011• EN 61000-4-2: A1 & A2• EN 61000-4-3• EN 61000-4-8: A1• ETSI EN 300 330-2• ETSI EN 301 489-1• ETSI EN 301 489-3- Complies with FCC Rules Part 15<ul style="list-style-type: none">• CFR 47 part 2• CFR 47 Part 15
Standard Accessories	<ul style="list-style-type: none">- USB data cable- 100-240V AC mains charger (Lithium-ion battery)- Soft carry bag (Roll around bag if purchased with transmitter)- User handbook
Optional Accessories	<ul style="list-style-type: none">- Portable Transmitters: Loc-1Tx, Loc-5Tx, Loc-10Tx, Loc-10TxSIS- Sondes (waterproof self-contained transmitters for use in pipes & ducts)<ul style="list-style-type: none">• D18-33-SR44 - 0.75in(Dia.) x 3.1in(L) (18mm x 80mm), 33 kHz, range 15ft (4.5m), 2 x button cell batteries• D38-33-AA – 1.5in(Dia.) x 4.1in(L) (38mm x 105mm), 33 kHz, range 16.3ft (5m), 1 x AA battery• D38-09-AA – 1.5in(Dia.) x 4.1in(L) (38mm x 105mm), 9.82 kHz, range 16.3ft (5m), 1 x AA battery• D38-83-AA – 1.5in(Dia.) x 4.1in(L) (38mm x 105mm), 83 kHz, range 16.3ft (5m), 1 x AA battery

多功能管線探測器

vLoc-5000 Utility Locating System



廠牌：美國



型號：vLoc-5000

	<ul style="list-style-type: none"> • D64-33-6LR61 – 2.5in(Dia.) x 7.3in(L) (64mm x 186mm), 33 kHz, range 26ft (8m), 1 x 6LR61 battery • D64-09-6LR61 – 2.5in(Dia.) x 7.3in(L) (64mm x 186mm), 9.82 kHz, range 26ft (8m), 1 x 6LR61 battery • D64-83-6LR61 – 2.5in(Dia.) x 7.3in(L) (64mm x 186mm), 83 kHz, range 26ft (8m), 1 x 6LR61 battery • D23F-512-AA / D23F-640-AA – 1in(Dia.) x 18in(L) (23mm x 456mm), 512Hz or 640Hz, range 20ft (7m), flexible Sonde in 3 sections for use in cast iron pipes as well as non metallic pipes, 1 x AA battery - A-frame USB (for Sheath Fault Finding 3/6Hz only) - A-frame analogue – general fault finding, no frequency restriction - Remote Antenna USB (standard locating only) - Remote Antenna Analogue (signal select, signal direction & standard locating) - Custom Bluetooth Module (Easy Fit) - Internal GPS Module - Vehicle charging lead (Lithium-ion battery)
--	---

C. Operational

Item	Parameter
Information Displayed	<ul style="list-style-type: none"> - Signal strength - moving bar graph & numeric value - Mode indication (“Peak”, “Null”, “Broad Peak”, “Sonde” and “Peak with proportional left/right arrows” location) - Proportional left/right indication - Compass: full 360° line direction indicator - Plug and play automatic recognition of accessories - Accessory specific custom screen - Line location - depth & current measurement - Sonde location - depth measurement - Gain level (in dB) - Frequency and applicable operation selected (Signal Select/Signal Direction) - Battery status - Speaker volume - Operating frequency - Bluetooth and GPS status - Configuration menu & submenus - Customer definable start up screen - Magnetic Field Strength (optional feature) - Signal Select Field Distortion and Phase Angle (optional feature) - Polarized compass arrow for Signal Select and Signal Direction
Configuration	<p>Intuitive setup menu enables user to configure:</p> <ul style="list-style-type: none"> - Setup frequency selection to toggle by “f” pushbutton - Setup location mode selection to toggle by “m” pushbutton - Sonde / line location - Units of measure (feet/meter) - Power and radio modes – 50Hz or 60Hz environments - Sound (Pitch) – normal/modulated - Language - Continuous depth/current options

多功能管線探測器

vLoc-5000 Utility Locating System



廠牌：美國



型號：vLoc-5000

	<ul style="list-style-type: none"> - Loudspeaker level - Backlight - Bluetooth pairing if fitted - Auto shut down – 2 or 5 minutes or never
Internal Data Logging	<ul style="list-style-type: none"> - At least 1000 records. - All parameters stored at each location including Depth, Current, Mode, Gain Setting, and Frequency. - If connected to GPS (via Bluetooth) data also recorded with coordinates and date time. - Files can be saved as .kml, .txt, .xls, .shp., .csv. - Data transfer program MyLocator2 available from www.vivax-metrotech.com
Operating Frequencies	Frequency set listed below.
Pre-defined Frequencies	<p>Configurable frequencies from 16Hz to 200 kHz. Signal Direction at any frequency pair below 2 kHz. Signal Select at 491Hz, 982Hz, 8440Hz and 9820Hz. Vivax-Metrotech Corporation retains the right to make additions or deletions to this list at any time.</p>
Operating Modes	<ul style="list-style-type: none"> - Auto and Manual Gain (optional) - Peak - Null with left/right arrows - Sonde - Broad Peak - Peak with proportional left/right arrows
Gain Control	Manual gain using "+" or "-" with one touch to return to center (60% of FSD)
Data Transfer	- Uses vivax-metrotech software application tool available free of charge from www.vivax-metrotech.com . Data can be saved in following format: xlx, txt, fhp, kml (Google earth)
Performance Using Single Undistorted Signal Source	Locate pinpointing accuracy:
	<ul style="list-style-type: none"> - up to 9ft (3m) – 3% of depth - over 9ft (3m) – 5% of depth
	Depth measurement accuracy:
	<ul style="list-style-type: none"> - 3% of depth
	Current measurement accuracy:
	<ul style="list-style-type: none"> - 3% of actual current – up to 9ft (3m) - 5% of actual current – over 9ft (3m)
	Depth range: Dependent on strength of signal radiating to locator

D. Sensitivity

Item	Parameter
Mode	Sensitivity at 3.2ft (1m)
50Hz/Power mode	7.5mA
Radio mode	20µA
512Hz/640Hz	400µA
8kHz	40µA
32kHz and Above	25µA

多功能管線探測器

vLoc-5000 Utility Locating System



廠牌：美國 

型號：vLoc-5000

E. Environmental

Item	Parameter
Temperature Range	Operating: -4°F to 122°F (-20°C to 50°C) Storage : -40°F to 140°F (-40°C to 60°C)
Weather Proof	IP54 and NEMA 4
Shipping Weight	37lbs (17kg) (with transmitter)
Shipping Dimension	17.5in(L) x 11.2in(W) x 30.1in(H) (765mm x 285mm x 445mm) (with transmitter)

F. Warranty

Item	Parameter
Warranty	12 months

G. Upgrade

Item	Parameter
Software	Software can be upgraded using a PC with USB port. Programs & locator software will be available via MyLocator2.

H. Holux Bluetooth GPS (Optional Accessory)

Item	Parameter
Overview	The M-1200E high performance Bluetooth™ GPS Receiver which featured with: - Built-in rechargeable Lithium-ion battery without external power supply
Weight	- 0.07lbs (30g)
Dimension	- 2.63in(L) x 0.9in(W) x 0.63in(H) (67mm x 23mm x 16mm)
Specification	- Tracks up to 32 satellites - Receiver: L1, 1575.42 MHz - C/A code: 1.023 MHz - Update rate: 1Hz - Antenna type: built-in patch antenna - Minimum signal tracked: -159dBm - On/Off switch: slide switcher - Lithium-ion battery lasts for 15 hours of use - Accuracy better than 3m when receiving SBAS correction signal
LED Indication	- Bluetooth - Navigation update - Battery/charger status indication
Temperature Range	- Store Temperature • -4°F to 140°F (-20°C to 60°C) • -22°F to 176°F (-30°C to 80°C) (Without Lithium-ion battery) - Operation Temperature: 14°F to 140°F (-10°C to 60°C)

I. Features

Item	Parameter
Enhanced Features	- Reduced size and weight with enhanced ergonomic design - Improved power management and Lithium-ion rechargeable batteries provide longer battery life (approx 300% improvement from vLocPro) - Auto detects batteries type (Lithium-ion/Alkaline) and displays appropriate status - Non-reflective display - Enable/Disable auto shut off mode
	- USB data logging (Future feature) - Analogue channel (Future feature) - Internal data logging (1000 records)

Disclaimer: Product and accessory specification and availability information is subject to change without prior notice.

多功能管線探測器

vLoc-5000 Utility Locating System



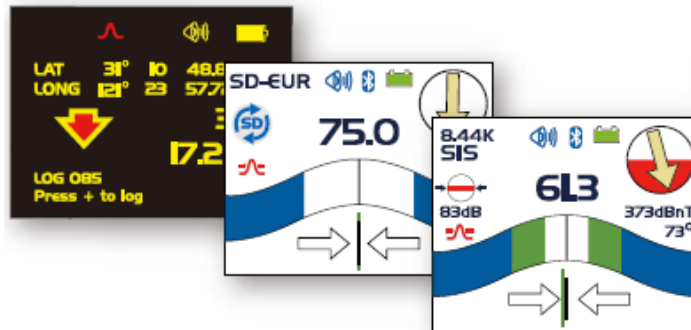
廠牌：美國



型號：vLoc-5000



多功能管線探測器



▲vLoc-5000 接收器



▲Loc-10Tx 發射器



Instruments · Metrology & Testing Equipment

儀器、度量衡計器 & 試驗設備

研士強國際集團 YENSTRON GROUP

益瀚國際企業股份有限公司

40767台中市西屯區工業區一路2巷7號1F

台中總公司/TEL: (04) 2359-3199 FAX: (04) 2359-8507

台南營業處/TEL: (06) 358-3169 FAX: (06) 358-3167

<http://www.yenstron.com.tw>

e-mail: sale88@yenstron.com.tw