



RoadScan™ 30



益瀚儀器

The affordable RoadScan™ 30 system provides users with an effective tool for quickly determining pavement layer thickness. RoadScan 30 can collect data densities not obtainable using other labor-intensive methods. RoadScan data can be acquired at highway speeds, which eliminates the need for lane closures and provides a safer working environment.

The RoadScan Advantage

The RoadScan system, with available accessories, provides all the components necessary to perform a GPR road inspection. The SIR® 30 control unit is a configurable multi-channel system, allowing users the ability to operate one to four antennas simultaneously at high speeds.



<p>MAX DEPTH 91 cm (3 feet)</p>	<p>ANTENNA OPTIONS 2.0 GHz, 1.0 GHz</p>
<p>WEIGHT 49.8 kg (110 pounds)</p>	<p>STORAGE CAPACITY 2 Channel: 250 GB 4 Channel: 500 GB</p>
<p>OPTIONAL SOFTWARE RADAN 7, RADAN 7 RoadScan Module</p>	<p>ACCESSORIES Antenna vehicle front mount, Antenna vehicle trailer mount</p>

New and improved smart antennas simplify set-up with automatic identification to the SIR 30. Customize the system for your specific needs, configure the RoadScan 30 with your choice of accessory antennas.



See our website for more information and detailed specifications: www.geophysical.com

ROADSCAN FEATURES

Non-Destructive Pavement Testing

RoadScan can quickly collect pavement layer thickness data. The system acquires data at highway speeds, which eliminates the need for lane closures and provides a safer working environment

Quantifiable Data

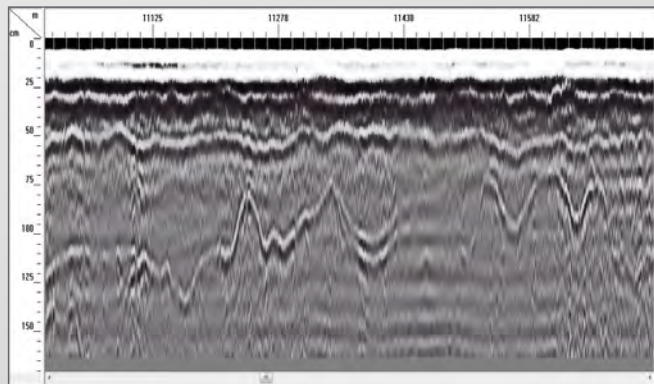
Ground penetrating radar offers users a quick and effective way to determine pavement layer thickness. GPR can evaluate base and sub-base layers with data collection densities not obtainable by traditional labor-intensive methods, such as coring.

Pavement Evaluation Results

Data can be easily exported as ASCII output files for simple data transfer to other software programs. Or, migrate data results as a Google Earth™ .kml file for enhanced visualization.

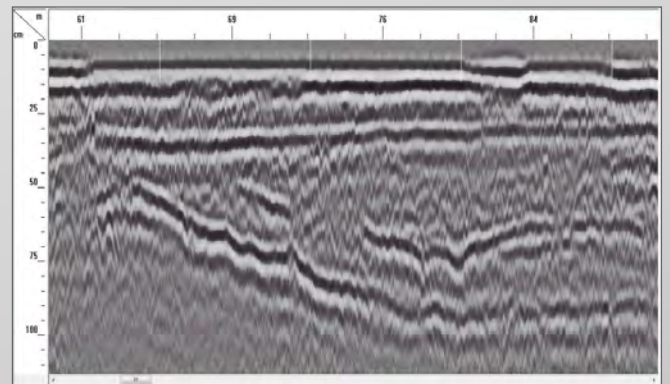
ROADSCAN FLEXIBILITY

Using the SIR 30 as the foundation of the RoadScan system, one can obtain additional information with accessory antennas. Many RoadScan clients elect to use the 900 MHz or 400 MHz antenna to obtain additional information on base or sub-base layers.



Base and Sub-base Layers

400 MHz data showing base and sub-base layers.



Subsurface Structure

900 MHz data showing subsurface structure with several layers.

TYPICAL USES

NDT road evaluation

Measure pavement thickness

Evaluate base and sub-base conditions

Measure asphalt prior to milling operations

Determine areas to core

FCC, RSS-220 and CE Certified

 專業代理~
研士強國際集團 YENSTRON GROUP
益瀚國際科技股份有限公司
台中總公司: 407227 台中市西屯區工業區一路2巷7號1F
TEL: (04)2359-3199 FAX: (04)2359-8507
<http://www.yenstron.com.tw>

Geophysical Survey Systems, Inc.

40 Simon Street • Nashua, NH 03060-3075 USA • www.geophysical.com

